

### PURPOSE

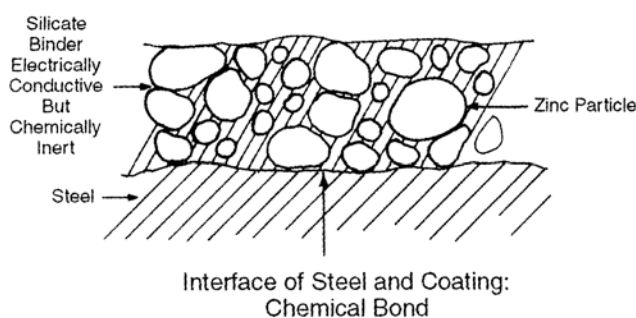
This section provides information on some of the characteristics and potential application problems of zinc silicates.

### PROPERTIES OF INORGANIC ZINC-RICH COATINGS

Inorganic zinc rich coatings afford superb corrosion resistance, they are also rock hard and very abrasion-resistant. They make some of the best anti-corrosive primers available. Ethyl silicate based inorganic zincs (Galvit ES600 & Galvit ES510) should be applied at 75 microns (dft). Because they have a tendency to grip unlike most other coatings, they may be applied to the faying surfaces of bolted steel joints. Inorganic zinc-rich primers have excellent resistance to temperatures up to the melting point of zinc (above 400°C).

Inorganic zincs should not be exposed to acids and alkalis. However, their resistance to organic solvents and organic chemicals is excellent.

The term "zinc-rich" refers to the percent by weight of metallic zinc in the cured coating film, which may range from 50% to 90%. The film is a hard, adherent coating composed of metallic zinc powder suspended in a silicate matrix (*diagram 1*).



*Diagram 1*

### CURING MECHANISM

These coatings cure by hydrolysis or reaction with moisture following the evaporation of solvent. These coatings are typically resistant to rain showers in one hour or less. High humidity conditions usually accelerate the cure of ethyl silicates. When the relative humidity is less than 40%, water may be sprayed on the coating surface to complete the curing process.

### FILM CURE

To determine if a film has cured a clean cloth soaked in methyl ethyl ketone (MEK) is rubbed over the coating. A properly cured film should have no zinc transfer onto the cloth.

### Bubbling/Pinholes

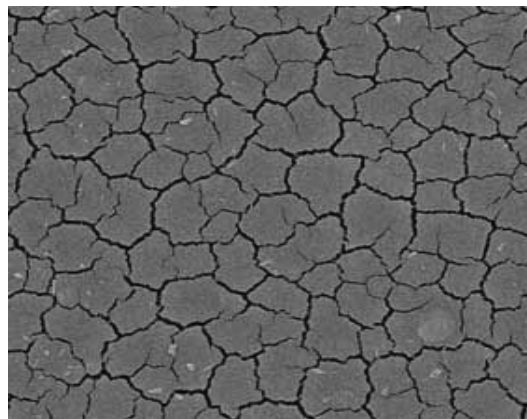
The zinc silicate matrix film is quite porous, which can result in bubbling or pinholes when a subsequent coating is applied. To overcome bubbling and/or pinholes excessive film builds and overspray should be avoided and/or removed prior to topcoating. For best control over the spray application conventional spray is preferred over airless equipment.

When topcoating, apply a mist/tack coat of product, thinned approximately 25% to seal off the zinc prior to application of a full coat.

### Mud Cracking

Mud cracking (*diagram 2*) can occur due to a number of reasons, these include:

- Low blast profiles.
- Excessive film build.
- Poor ambient drying conditions.
- Old Product.
- Insufficient ventilation, which is pronounced in concave corners and cavities.



*Diagram 2*

### Zinc Salts

Zinc salts are the natural decomposition product of zinc as it oxidises to protect the steel. These salts also act as a physical barrier by clogging up the porous zinc silicate film - thus reducing the ingress of water. High pressure washing, scrubbing with a nylon brush and water, mechanical cleaning using a green scouring pad or sweepblasting (not generally used) are methods for the removal of these salts. Removal of all zinc salts is near impossible and not necessary.

### TOUCH UP/REPAIRS

Touch up or repairs of inorganic zincs are normally done with two pack epoxy zincs. This is because it is often difficult to blast clean only the area needing repair and recoat only the area blasted. Invariably the coating applied will need to overlap onto the existing inorganic zinc. If an inorganic zinc is used for this purpose adhesion will be compromised.

**CUSTOMER SERVICE HOTLINE 132101 (Aust), 0800 735 551 (NZ)**

**Watty!® is a registered trademark of Watty! Australia Pty Ltd.**

1. This information is provided with respect to the listed Watty! products. Watty! recommends that: (a) you review the Technical Data Sheets (TDS) and Material Safety Data Sheets (MSDS) before you use or handle the product; (b) the product be used only in accordance with the information provided by Watty!; (c) the product be transported, stored and handled in accordance with the information on the MSDS and relevant TDS; and (d) you thoroughly test the product, using the recommended application method on a sample of intended substrate, before using the product. 2. The information in this TDS was prepared using information gathered during product development. While Watty! endeavours to update this information and maintain the accuracy and currency of its contents, Watty! cannot guarantee that the information provided is wholly comprehensive. 3. For all product and non-product related information, Watty! recommends that you conduct such additional investigations as may be necessary to satisfy yourself of the accuracy, currency and comprehensiveness of the information on which you rely in using and handling the product. If you require further information please contact your nearest Watty! Office. 4. To the full extent permitted by law, Watty!'s liability for breach of a condition or warranty implied into the contract for sale between Watty! and you by law is limited at Watty!'s election to: (a) the replacement of the product; or (b) payment of the cost of replacing the product.  
WATTYL AUSTRALIA PTY LTD (ABN 40 000 035 914)